

TM9SF1 antibody - N-terminal region
Rabbit Polyclonal Antibody
Catalog # AI12476

Specification

TM9SF1 antibody - N-terminal region - Product Information

Application	WB, IHC
Primary Accession	O15321
Other Accession	NM_006405 , NP_006396
Reactivity	Human, Mouse, Rat, Rabbit, Zebrafish, Pig, Goat, Horse, Bovine, Guinea Pig, Dog
Predicted	Human, Mouse, Rat, Rabbit, Zebrafish, Horse
Host	Rabbit
Clonality	Polyclonal
Calculated MW	67kDa KDa

TM9SF1 antibody - N-terminal region - Additional Information

Gene ID 10548

Alias Symbol HMP70, MP70

Other Names

Transmembrane 9 superfamily member 1, MP70 protein family member, hMP70, TM9SF1

Format

Liquid. Purified antibody supplied in 1x PBS buffer with 0.09% (w/v) sodium azide and 2% sucrose.

Reconstitution & Storage

Add 100 ul of distilled water. Final anti-TM9SF1 antibody concentration is 1 mg/ml in PBS buffer with 2% sucrose. For longer periods of storage, store at 20°C. Avoid repeat freeze-thaw cycles.

Precautions

TM9SF1 antibody - N-terminal region is for research use only and not for use in diagnostic or therapeutic procedures.

TM9SF1 antibody - N-terminal region - Protein Information

Name TM9SF1

Function

Plays an essential role in autophagy.

Cellular Location

Lysosome membrane; Multi-pass membrane protein. Cytoplasmic vesicle, autophagosome membrane; Multi-pass membrane protein

Tissue Location

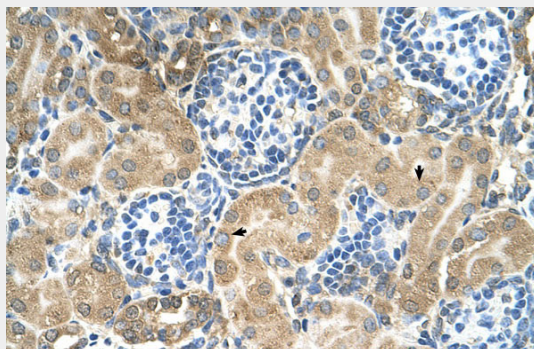
Expressed in lung, pancreas, kidney, liver, placenta, skeletal muscle, heart and brain. The amount in skeletal muscle, heart and brain were considerably lower than in the other tissues.

TM9SF1 antibody - N-terminal region - Protocols

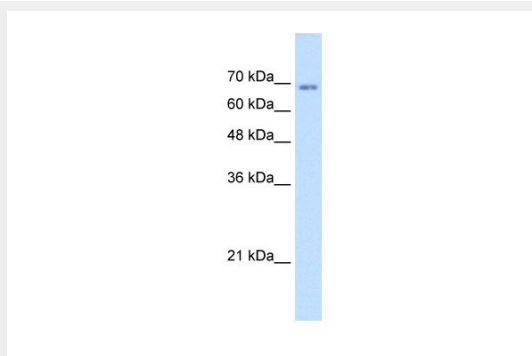
Provided below are standard protocols that you may find useful for product applications.

- [Western Blot](#)
- [Blocking Peptides](#)
- [Dot Blot](#)
- [Immunohistochemistry](#)
- [Immunofluorescence](#)
- [Immunoprecipitation](#)
- [Flow Cytometry](#)
- [Cell Culture](#)

TM9SF1 antibody - N-terminal region - Images



Human kidney



WB Suggested Anti-TM9SF1 Antibody Titration: 1.25 μ g/ml
Positive Control: Jurkat cell lysate

TM9SF1 antibody - N-terminal region - References

Sugasawa, T., (2001) Gene 273(2), 227-237 Reconstitution and Storage: For short term use, store at 2-8 $^{\circ}$ C up to 1 week. For long term storage, store at -20 $^{\circ}$ C in small aliquots to prevent freeze-thaw cycles. Publications: He, P. et al. High-throughput functional screening for autophagy-related genes and identification of TM9SF1 as a autophagosome-inducing gene. Autophagy 5, 52-60 (2009). WB, ICC/IF, Bovine, Human, Mouse, Dog, Zebrafish, Pig, Horse, Rabbit, Rat, Guinea pig, Goat 19029833